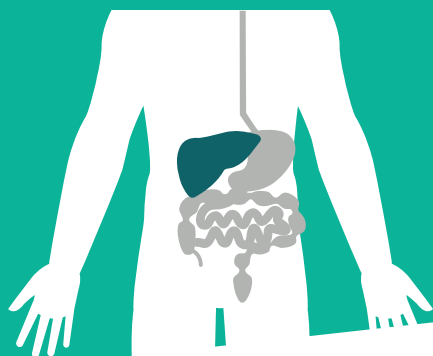


WHAT IS HEPATOCELLULAR CARCINOMA?



HEPATOCELLULAR CARCINOMA (HCC) is the most common type of liver cancer, accounting for about 75% of liver cancer cases in the U.S.¹ According to 2020 annual estimates from the American Cancer Society, **43,000** new cases of liver cancer will be diagnosed and approximately **30,000** people will die from liver cancer this year.¹

How common is liver cancer?

6th Worldwide, liver cancer is the **sixth most prevalent** cancer.²

In the U.S., liver cancer incidence has **more than tripled** since 1980.¹

Liver cancer is about **3 times** more common in **men** than in women.¹

What are some common risk factors?



Chronic infection with hepatitis B virus and/or hepatitis C virus



Heavy alcohol consumption



Obesity



Diabetes



Smoking

Quick Facts



The median age at diagnosis in the U.S. is **64** years old.³

HCC is a **leading cause** of cancer-related deaths worldwide.⁴



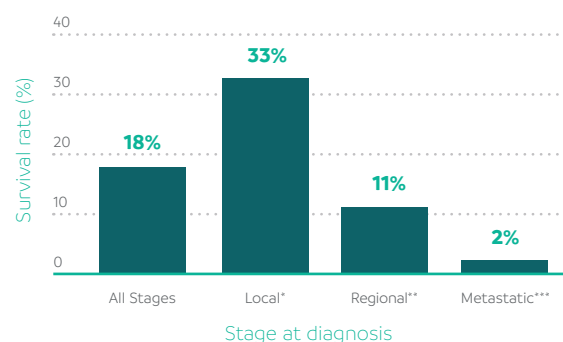
HCC related to hepatitis C infection has become the **fastest-rising cause** of cancer-related deaths in the U.S.⁴

Liver cancer is more common in countries in sub-Saharan Africa and Southeast Asia than in the U.S. In many of these countries, it is the **most common** type of cancer.⁵



What is the outlook?

Five-year survival rates by stage at diagnosis:



* The cancer has not spread beyond the liver.

** The cancer has spread directly to nearby lymph nodes, tissues or organs.

*** The cancer has spread to distant parts of the body.

What are the treatment options?

Standard treatment options for patients with HCC include:



Surveillance



Surgery



Liver transplant



Ablation therapy*



Embolization therapy**



Targeted therapy***



Radiation therapy



Immunotherapy

Patients may also receive investigational treatments by participating in a clinical trial.

* Destroys body tissue

** Uses substances to block or decrease the flow of blood

*** Uses drugs or other substances to more precisely identify and attack cancer cells

Media Contact

Lindsay Treadway
Public Affairs and Advocacy
Relations, Exelixis, Inc.
(650) 837-7522
ltreadway@exelixis.com

EXELIXIS

SOURCES 1. American Cancer Society Cancer Facts and Figures 2020. <https://www.cancer.org/content/dam/cancer-org/research/cancer-facts-and-statistics/annual-cancer-facts-and-figures/2020/cancer-facts-and-figures-2020.pdf>. Accessed March 2020. 2. Bray F, Ferlay J, Soerjomataram I, Siegel RL, Torre LA, & Jemal A: Global cancer statistics 2018: GLOBOCAN estimates of incidence and mortality worldwide for 36 cancers in 185 countries. CA: A Cancer Journal for Clinicians, 68(6), 394–424, 2018. 3. National Cancer Institute. SEER Stat Fact Sheets: Liver and Intrahepatic Bile Duct Cancer. (<https://seer.cancer.gov/statfacts/html/livibd.html>). Accessed March 2020. 4. Blue Faery. Statistics. (<http://www.bluefaery.org/statistics/>). Accessed March 2020. 5. American Cancer Society. Key Statistics About Liver Cancer. (<https://www.cancer.org/cancer/liver-cancer/about/what-is-key-statistics.html>). Accessed March 2020. 6. National Cancer Institute. Adult Primary Liver Cancer Treatment (PDQ®)—Patient Version. (https://www.cancer.gov/types/liver/patient/adult-liver-treatment-pdq#link/_1). Accessed March 2020.